

HAIMER®
Quality Wins.

Since 1977



HAIMER 產品簡介
HAIMER Products

完善的質量體系
PRECISION REQUIRES PERFECTION

高品質目標對於妥協不留有任何餘地。這意味著:當您選購了HAIMER時,您將獲得HAIMER的高品質。我們第一考慮的就是產品的品質。我們用高標準的質量體系規範生產。因為我們知道長期經營必須依靠 - 品質取勝!

High targets leave no space for compromises. This means: When you buy HAIMER you really get HAIMER. When quality is concerned we first of all trust in ourselves. Not only that we produce all our products by ourselves. Also the fixtures and vices on our machines are made by HAIMER. Because we know that on the long run only Quality wins.

HAIMER.

Qualitätspass

<p>100% Made in Germany</p>	<ul style="list-style-type: none"> ■ Gleich bleibend hohe Qualität durch 100% Kontrolle aus eigener Fertigung ■ Höchste Prozesssicherheit bei der Zerspanung 	✓
<p>Feingewuchtete Aufnahmen (G2,5 25.000 min⁻¹)</p>	<ul style="list-style-type: none"> ■ Ruhiger Spindellauf ■ Bessere Oberflächen ■ Maximale Werkzeugstandzeit ■ Lange Lebensdauer Ihrer Spindel 	✓
<p>Steilkegel wirklich AT3: (1,5 µm Formtoleranz)</p>	<ul style="list-style-type: none"> ■ Optimale Verbindung zwischen Maschine und Werkzeug ■ Höchste Prozesssicherheit bei der Feinbearbeitung ■ Fester Halt bei der Grobbearbeitung 	✓
<p>Hochpräzise Anzugsbolzen aus schlagzähem Spezialstahl</p>	<ul style="list-style-type: none"> ■ Keine Bruchgefahr ■ Höchste Unfallsicherheit ■ Exakte Werkzeugspannung 	✓
<p>Alle Funktionsflächen bearbeitet</p>	<ul style="list-style-type: none"> ■ Symmetrische Krafteinleitung an der Spannschulter des HSK ■ Passgenaue Mitnehmernuten am HSK ■ Genauer als DIN 	✓




HAIMER.

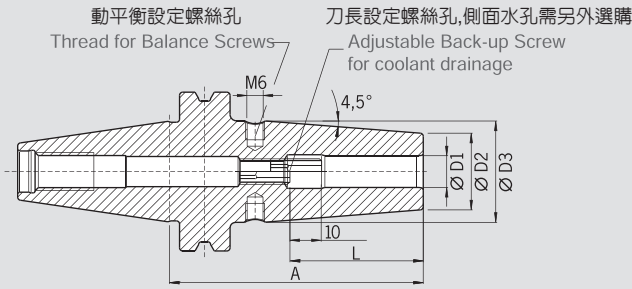
Certificate of Quality

<p>100% Made in Germany</p>	<ul style="list-style-type: none"> ■ Constant high quality due to 100% control in own factory ■ Highest process reliability during machining 	✓
<p>Tool holders fine balanced (G2,5 at 25.000 rpm)</p>	<ul style="list-style-type: none"> ■ Low vibration on spindle ■ Better surfaces ■ Maximum tool life ■ Long lifetime of spindle 	✓
<p>Steep taper really AT3: (1,5 µm shape tolerance)</p>	<ul style="list-style-type: none"> ■ Optimum connection between machine and tool ■ Highest process reliability during fine machining ■ Secure clamping during heavy milling 	✓
<p>High precision pull studs made of special steel with high toughness</p>	<ul style="list-style-type: none"> ■ No danger of breakage ■ Highest security against accidents ■ Precise tool clamping 	✓
<p>All functional surfaces machined</p>	<ul style="list-style-type: none"> ■ Symmetric force transmission to clamping shoulder of HSK ■ Precise drive slots on the HSK ■ More accurate than DIN 	✓




HAIMER的刀桿產品
 DIN 69871.SK30/40/50系列
 JIS B 6339.BT30/40/50系列

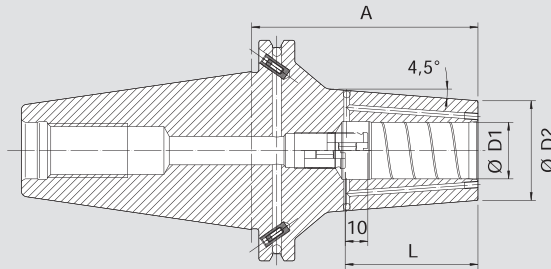
品質保證 Certificate of Quality	
☑ 刀桿動平衡等級	☑ Chuck body fine balanced G2.5 / 25,000 r.p.m. 或/或 U<1 gmm
☑ 所有功能面, 全面加工	☑ All functional surfaces machined
☑ 刀桿錐度精度:AT3	☑ Taper tolerance AT3
☑ ADB型切削水孔設計	☑ Coolant supply form ADB



DIN 69871 SK30/40/50 燒結刀桿 SHRINK FIT CHUCK, 直徑3~32mm, 有效長60~200mm

JIS B 6339 BT30/40/50 燒結刀桿 SHRINK FIT CHUCK, 直徑3~32mm, 有效長60~200mm

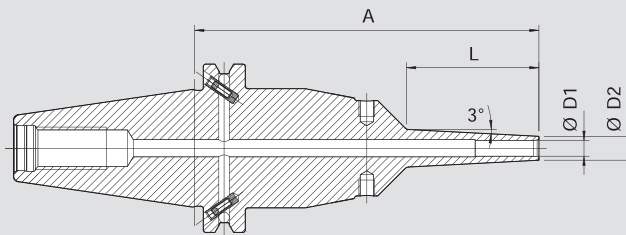
品質保證 Certificate of Quality	
☑ 刀桿動平衡等級	☑ Chuck body fine balanced G2.5 / 25,000 r.p.m. 或/或 U<1 gmm
☑ 所有功能面, 全面加工	☑ All functional surfaces machined
☑ 刀桿錐度精度:AT3	☑ Taper tolerance AT3
☑ ADB型切削水孔設計	☑ Coolant supply form ADB
☑ 冷卻噴孔, 可封閉	☑ Cool Jet, can be sealed



DIN 69871 SK40/50 強力燒結刀桿 POWER SHRINK FIT CHUCK, 直徑6~32mm, 有效長65~200mm, 側邊出水孔

JIS B 6339 BT40/50 強力燒結刀桿 POWER SHRINK FIT CHUCK, 直徑6~32mm, 有效長70~200mm, 側邊出水孔

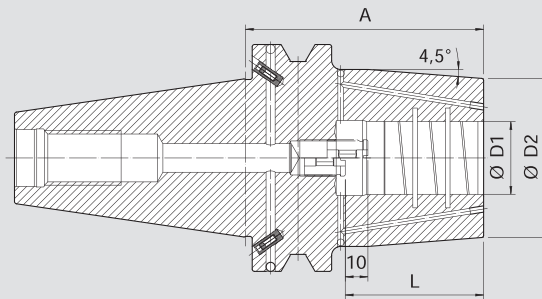
品質保證 Certificate of Quality	
☑ 刀桿動平衡等級	☑ Chuck body fine balanced G2.5 / 25,000 r.p.m. 或/或 U<1 gmm
☑ 所有功能面, 全面加工	☑ All functional surfaces machined
☑ 刀桿錐度精度:AT3	☑ Taper tolerance AT3
☑ ADB型切削水孔設計	☑ Coolant supply form ADB



DIN 69871 SK40/50 迷你強力燒結刀桿 POWER MINI SHRINK CHUCK, 直徑3~16mm, 有效長130~200mm

JIS B 6339 BT40 迷你強力燒結刀桿 POWER MINI SHRINK CHUCK, 直徑3~16mm, 有效長130~200mm

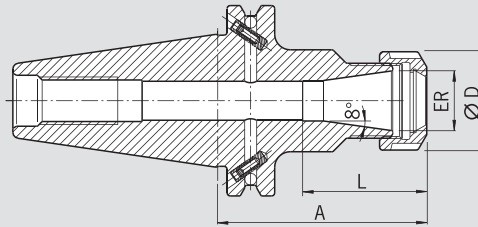
品質保證 Certificate of Quality	
☑ 刀桿動平衡等級	☑ Chuck body fine balanced G2.5 / 25,000 r.p.m. 或/或 U<1 gmm
☑ 所有功能面, 全面加工	☑ All functional surfaces machined
☑ 刀桿錐度精度:AT3	☑ Taper tolerance AT3
☑ ADB型切削水孔設計	☑ Coolant supply form ADB
☑ 冷卻噴孔, 可封閉	☑ Cool Jet, can be sealed



DIN 69871 SK50 重型燒結刀桿 HAVY DUTY CHUCK, 直徑16~50mm, 有效長80~200mm, 側邊出水孔

JIS B 6339 BT50 重型燒結刀桿 HAVY DUTY CHUCK, 直徑16~50mm, 有效長80~200mm, 側邊出水孔

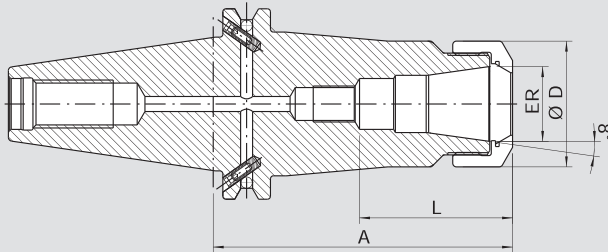
HAIMER的刀桿產品
 DIN 69871.SK30/40/50系列
 JIS B 6339.BT30/40/50系列



品質保證 Certificate of Quality	
<input checked="" type="checkbox"/>	刀桿動平衡等級 Chuck body fine balanced G2.5 / 22,000 r.p.m.
<input checked="" type="checkbox"/>	所有功能面, 全面加工 All functional surfaces machined
<input checked="" type="checkbox"/>	刀桿錐度精度:AT3 Taper tolerance AT3
<input checked="" type="checkbox"/>	ADB型切削水孔設計 Coolant supply form ADB

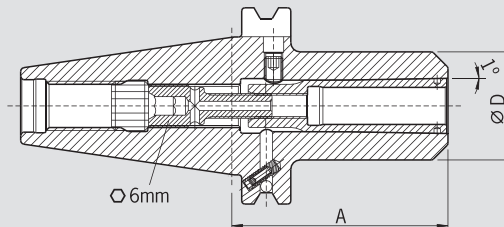
DIN 69871 SK40/50 ER 筒夾刀桿 COLLET CHUCK ER, 夾持ER16/25/32/40, 有效長70~200mm

JIS B 6339 BT30/40/50 ER 筒夾刀桿 COLLET CHUCK ER, 夾持ER11/16/20/25/32/40, 有效長60~200mm



品質保證 Certificate of Quality	
<input checked="" type="checkbox"/>	刀桿動平衡等級 Chuck body fine balanced G2.5 / 25,000 r.p.m.
<input checked="" type="checkbox"/>	所有功能面, 全面加工 All functional surfaces machined
<input checked="" type="checkbox"/>	刀桿錐度精度:AT3 Taper tolerance AT3
<input checked="" type="checkbox"/>	ADB型切削水孔設計 Coolant supply form ADB

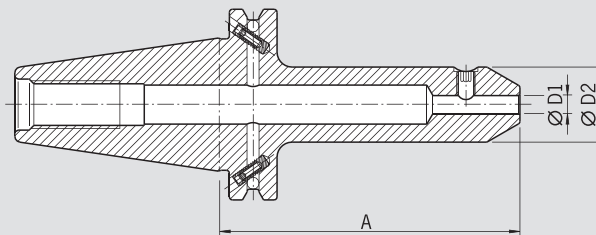
DIN 69871 SK40 強力筒夾刀桿 POWER COLLET CHUCK, 強力高精度筒夾, 夾持ER16/25/32, 有效長70~160mm



品質保證 Certificate of Quality	
<input checked="" type="checkbox"/>	刀桿動平衡等級 Chuck body fine balanced G2.5 / 25,000 r.p.m.
<input checked="" type="checkbox"/>	所有功能面, 全面加工 All functional surfaces machined
<input checked="" type="checkbox"/>	刀桿錐度精度:AT3 Taper tolerance AT3
<input checked="" type="checkbox"/>	ADB型切削水孔設計 Coolant supply form ADB

DIN 69871 SK40/50 後拉式高精度刀桿 HIGH-PRECISION CHUCK, 夾持直徑2~20mm, 有效長65~160mm

JIS B 6339 BT40/50 後拉式高精度刀桿 HIGH-PRECISION CHUCK, 夾持直徑2~20mm, 有效長65~160mm



品質保證 Certificate of Quality	
<input checked="" type="checkbox"/>	刀桿動平衡等級 Chuck body fine balanced G2.5 / 22,000 r.p.m.
<input checked="" type="checkbox"/>	所有功能面, 全面加工 All functional surfaces machined
<input checked="" type="checkbox"/>	刀桿錐度精度:AT3 Taper tolerance AT3
<input checked="" type="checkbox"/>	ADB型切削水孔設計 Coolant supply form ADB

DIN 69871 SK40/50 側固刀桿 WELDON TOOL HOLDER, 夾持直徑6~32mm, 有效長35~160mm

JIS B 6339 BT40/50 側固刀桿 WELDON TOOL HOLDER, 夾持直徑6~32mm, 有效長35~160mm

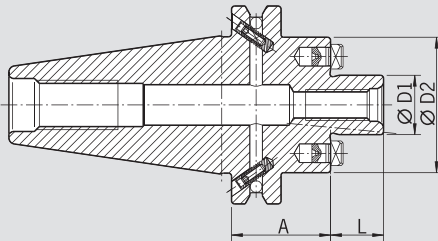
HAIMER的刀桿產品

DIN 69871.SK30/40/50系列

JIS B 6339.BT30/40/50系列

品質保證 Certificate of Quality

- 刀桿動平衡等級
- Chuck body fine balanced
G2.5 / 22,000 r.p.m.
- 所有功能面, 全面加工
- All functional surfaces machined
- 刀桿錐度精度:AT3
- Taper tolerance AT3
- ADB型切削水孔設計
- Coolant supply form ADB

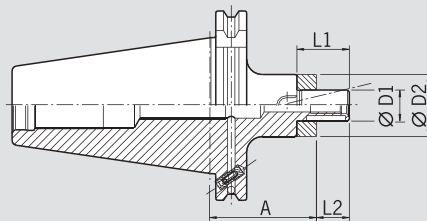


DIN 69871 SK40/50 面銑刀刀桿 FACE MILL ARBOR, 心軸直徑16/22/27/32/40/50/60mm, 有效長35~160mm, 可選冷卻噴孔

JIS B 6339 BT40/50 面銑刀刀桿 FACE MILL ARBOR, 心軸直徑22/27/32/40mm, 有效長35~100mm

品質保證 Certificate of Quality

- 刀桿動平衡等級
- Chuck body fine balanced
G2.5 / 22,000 r.p.m.
- 所有功能面, 全面加工
- All functional surfaces machined
- 刀桿錐度精度:AT3
- Taper tolerance AT3
- ADB型切削水孔設計
- Coolant supply form ADB

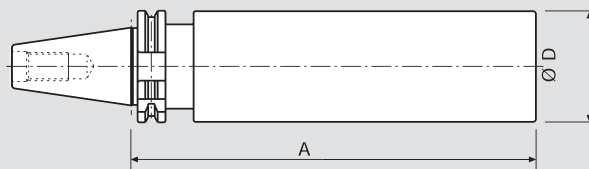


DIN 69871 SK40/50 殼銑刀刀桿 COMBINATION SHELL END MILL ARBOR, 心軸直徑16/22/27/32/40/50mm, 有效長55~200mm

JIS B 6339 BT40/50 殼銑刀刀桿 COMBINATION SHELL END MILL ARBOR, 心軸直徑16/22/27/32/40mm, 有效長55~160mm

品質保證 Certificate of Quality

- 所有功能面, 全面加工
- All functional surfaces machined
- 刀桿錐度精度:AT3
- Taper tolerance AT3
- ADB型切削水孔設計
- Coolant supply form ADB



DIN 69871 SK40/50 特殊訂作加工用刀桿 BLANK ADAPTER, 外徑63/95mm, 有效長100/230/315mm

JIS B 6339 BT40/50 特殊訂作加工用刀桿 BLANK ADAPTER, 外徑95mm, 有效長315mm

更多型號的HAIMER刀桿:

DIN 69871 SK40/50 側固刀桿, 直徑6~40mm, 有效長50~100mm

DIN 69871 SK40/50 莫氏斜度鎖牙刀桿, M1/2/3/4, 有效長50~95mm

DIN 69871 BT40/50 莫氏斜度鎖牙刀桿, M1/2/3/4, 有效長50~95mm

DIN 69871 SK40/50 莫氏斜度扁尾刀桿, M1/2/3/4, 有效長50~95mm

JIS B 69871 BT40/50 莫氏斜度扁尾刀桿, M1/2/3/4, 有效長50~95mm

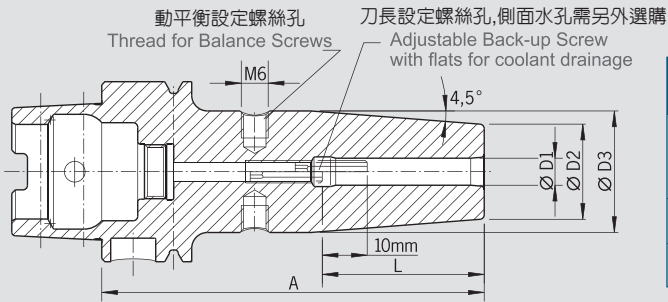
DIN 69871 SK40/50 快換交換型攻牙刀桿, 攻牙範圍M3~M24

DIN 69871 SK40/50 一體式鑽夾頭刀桿, 夾持直徑0.5~13mm, 有效長80~110mm

DIN 69871 SK50 轉換刀桿, SK50轉換至SK40/BT40

DIN 69871 SK40/50 鑽夾頭專用刀桿

HAIMER的刀桿產品
DIN 69893-1/5/6 HSK-A/E/F/C系列



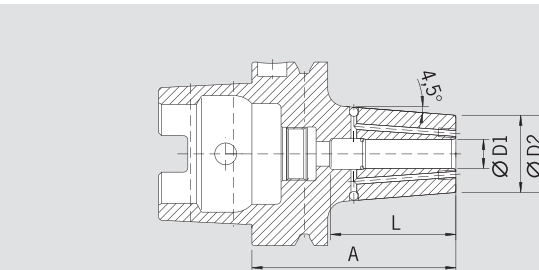
Form A

品質保證
Certificate of Quality

- 刀桿動平衡等級
- Chuck body fine balanced G2.5 / 25,000 r.p.m. 或/or U<1 gmm
- 所有功能面, 全面加工
- All functional surfaces machined
- 精度高於DIN標準
- More accurate than DIN

DIN 69893-1/5/6 HSK-A/E-F/C 系列燒結刀桿 SHRINK FIT CHUCK

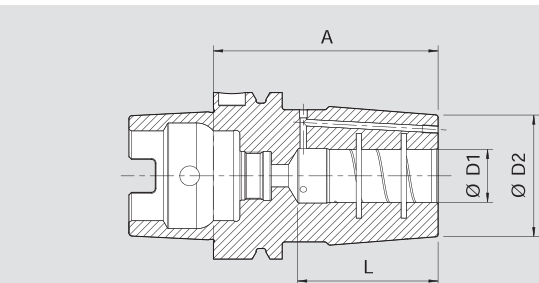
HSK25/32/40/50/63/80/100, 夾持直徑3~32mm, 有效長35~200mm



品質保證
Certificate of Quality

- 刀桿動平衡等級
- Chuck body fine balanced G2.5 / 25,000 r.p.m. 或/or U<1 gmm
- 所有功能面, 全面加工
- All functional surfaces machined
- 精度高於DIN標準
- More accurate than DIN
- ADB型切削水孔設計
- Coolant supply form ADB

DIN 69893-1 HSK-A63/100, 強力燒結刀桿, POWER SHRINK FIT CHUCK 夾持直徑6~32mm, 有效長70~200mm, 側邊出水孔



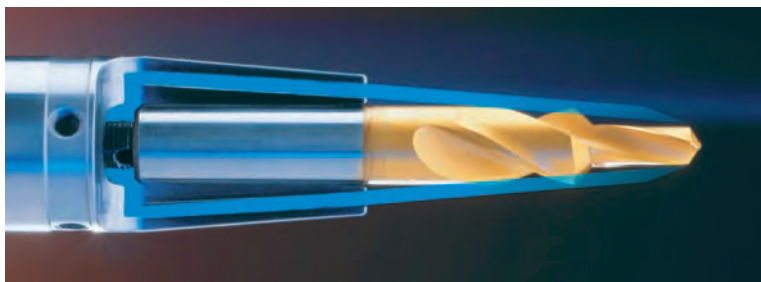
品質保證
Certificate of Quality

- 刀桿動平衡等級
- Chuck body fine balanced G2.5 / 25,000 r.p.m. 或/or U<1 gmm
- 所有功能面, 全面加工
- All functional surfaces machined
- 精度高於DIN標準
- More accurate than DIN
- ADB型切削水孔設計
- Coolant supply form ADB

DIN 69893-1 HSK-A63/100, 重型燒結刀桿, HEAVY DUTY CHUCK 夾持直徑16~50mm, 有效長85~200mm, 側邊出水孔

冷卻噴孔/Cool Jet

訂單編號/Order No.91.100.24



案例

使用

- 燒結刀桿 - HG後拉刀桿
- 面銑刀刀桿 - 側固刀桿

Examples

For use in:

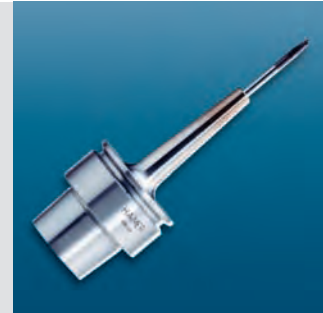
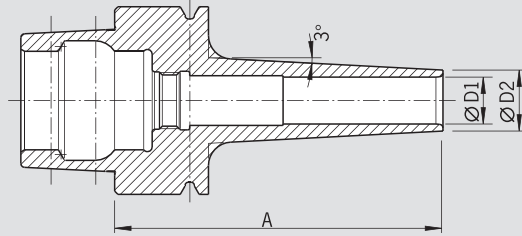
- Shrink fit chuck - HG chuck
- Face mill holder - Weldon



燒結刀桿
Shrink fit chuck

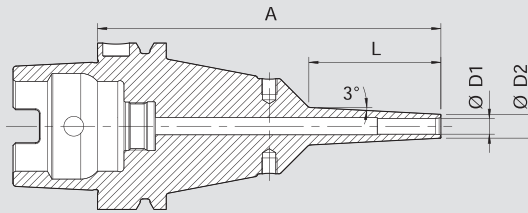
HAIMER的刀桿產品
DIN 69893-1/5/6 HSK-A/E/F/C系列

品質保證 Certificate of Quality
<input checked="" type="checkbox"/> 刀桿動平衡等級 <input checked="" type="checkbox"/> Chuck body fine balanced G2.5 / 25,000 r.p.m. 或/or U<1 gmm
<input checked="" type="checkbox"/> 所有功能面, 全面加工 <input checked="" type="checkbox"/> All functional surfaces machined
<input checked="" type="checkbox"/> 精度高於DIN標準 <input checked="" type="checkbox"/> More accurate than DIN



DIN 69893-1 HSK-A63/E40/E50, 迷你型燒結刀桿 MINI SHRINK CHUCK, 夾持直徑3~12mm, 有效長60~120mm

品質保證 Certificate of Quality
<input checked="" type="checkbox"/> 刀桿動平衡等級 <input checked="" type="checkbox"/> Chuck body fine balanced G2.5 / 25,000 r.p.m. 或/or U<1 gmm
<input checked="" type="checkbox"/> 所有功能面, 全面加工 <input checked="" type="checkbox"/> All functional surfaces machined
<input checked="" type="checkbox"/> 精度高於DIN標準 <input checked="" type="checkbox"/> More accurate than DIN

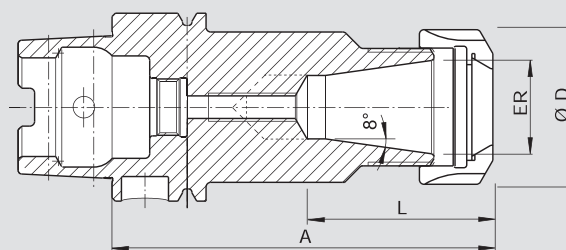


DIN 69893-1 HSK-A63 迷你強力型燒結刀桿 POWER MINI SHRINK CHUCK, 直徑3~16mm, 有效長130~200mm

Form A

品質保證 Certificate of Quality
<input checked="" type="checkbox"/> 刀桿動平衡等級 <input checked="" type="checkbox"/> Chuck body fine balanced G2.5 / 25,000 r.p.m. 或/or U<1 gmm
<input checked="" type="checkbox"/> 所有功能面, 全面加工 <input checked="" type="checkbox"/> All functional surfaces machined
<input checked="" type="checkbox"/> 精度高於DIN標準 <input checked="" type="checkbox"/> More accurate than DIN

HSK-A/DIN 69893-1



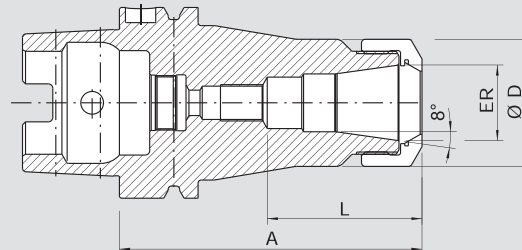
根據需求選擇冷卻管 /Coolant tubes on demand



DIN 69893-1/5/6 HSK-A/E/F 系列 ER 筒夾式刀桿 COLLET CHUCK ER

HSK25/32/40/50/63/80/100 夾持 ER11/16/20/25/32/40, 有效長43~160mm

品質保證 Certificate of Quality
<input checked="" type="checkbox"/> 刀桿動平衡等級 <input checked="" type="checkbox"/> Chuck body fine balanced G2.5 / 25,000 r.p.m. 或/or U<1 gmm
<input checked="" type="checkbox"/> 所有功能面, 全面加工 <input checked="" type="checkbox"/> All functional surfaces machined
<input checked="" type="checkbox"/> 精度高於DIN標準 <input checked="" type="checkbox"/> More accurate than DIN

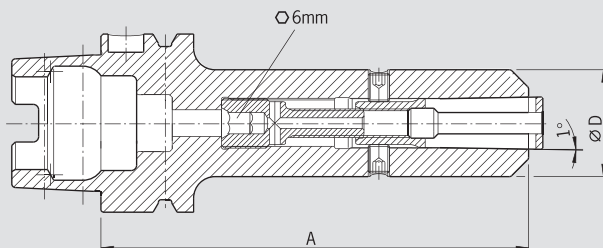


DIN 69893-1 HSK-A63 強力筒夾式刀桿 POWER COLLET CHUCK, 強力高精度筒夾, 夾持直徑2~20mm, 有效長75~160mm

HAIMER的刀桿產品
DIN 69893-1/5/6 HSK-A/E/F/C系列



HSK-A/DIN 69893-1



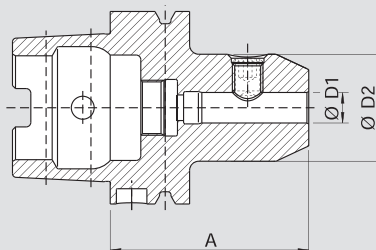
Form A

品質保證 Certificate of Quality	
<input checked="" type="checkbox"/>	刀桿動平衡等級 Chuck body fine balanced G2.5 / 25,000 r.p.m.
<input checked="" type="checkbox"/>	所有功能面, 全面加工 All functional surfaces machined
<input checked="" type="checkbox"/>	精度高於DIN標準 More accurate than DIN

DIN 69893-1 HSK-A63/100, 後拉式高精度刀桿 HIGH-PRECISION CHUCK, 夾持直徑2~20mm, 有效長120~160mm



HSK-A/DIN 69893-1



根據需求選擇冷卻管 /Coolant tubes on demand

Form A

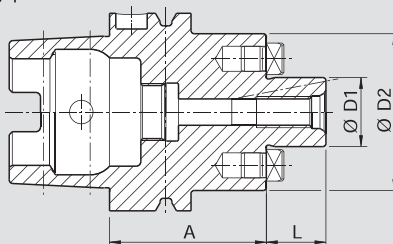
品質保證 Certificate of Quality	
<input checked="" type="checkbox"/>	刀桿動平衡等級 Chuck body fine balanced G2.5 / 25,000 r.p.m. 或 /or U<1 gmm
<input checked="" type="checkbox"/>	所有功能面, 全面加工 All functional surfaces machined
<input checked="" type="checkbox"/>	精度高於DIN標準 More accurate than DIN

DIN 69893-1/5 HSK-A/E 系列側固刀桿 WELDON TOOL HOLDER

HSK32/40/50/63/80/100, 夾持直徑6~32, 有效長60~160mm



HSK-A/DIN 69893-1



Form A

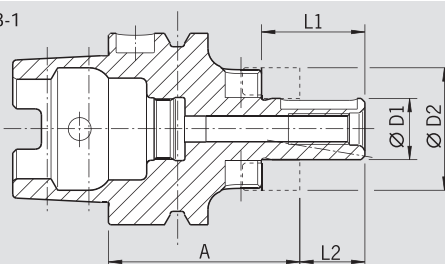
品質保證 Certificate of Quality	
<input checked="" type="checkbox"/>	刀桿動平衡等級 Chuck body fine balanced G2.5 / 25,000 r.p.m. 或 /or U<1 gmm
<input checked="" type="checkbox"/>	所有功能面, 全面加工 All functional surfaces machined
<input checked="" type="checkbox"/>	精度高於DIN標準 More accurate than DIN

DIN 69893-1/5 HSK-A/E/F 系列面銑刀桿 FACE MILL ARBOR

HSK40/50/63/100, 心軸直徑16/22/27/32/40/50mm, 有效長50~160mm



HSK-A/DIN 69893-1



根據需求選擇冷卻管 /Coolant tubes on demand

Form A

品質保證 Certificate of Quality	
<input checked="" type="checkbox"/>	刀桿動平衡等級 Chuck body fine balanced G2.5 / 25,000 r.p.m. 或 /or U<1 gmm
<input checked="" type="checkbox"/>	所有功能面, 全面加工 All functional surfaces machined
<input checked="" type="checkbox"/>	精度高於DIN標準 More accurate than DIN

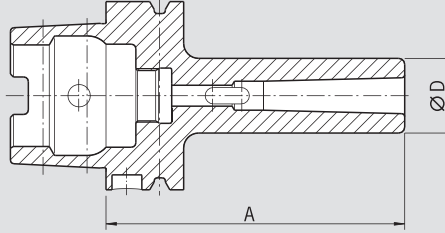
DIN 69893-1 HSK-A40/50/63/100, 殼銑刀刀桿 COMBINATION SHELL END MILL ARBOR, 心軸直徑16/22/27/32/40mm, 有效長50~160mm

HAIMER的刀桿產品
DIN 69893-1/5/6 HSK-A/E/F/C系列

Form A

HSK-A/DIN 69893-1

品質保證 Certificate of Quality
<input checked="" type="checkbox"/> 刀桿動平衡等級 <input checked="" type="checkbox"/> Chuck body fine balanced G6.3 / 8,000 r.p.m.
<input checked="" type="checkbox"/> 所有功能面, 全面加工 <input checked="" type="checkbox"/> All functional surfaces machined
<input checked="" type="checkbox"/> 精度高於DIN標準 <input checked="" type="checkbox"/> More accurate than DIN

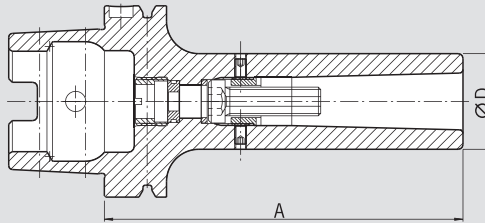


DIN 69893-1 HSK-A63/100, 莫氏斜度扁尾刀桿 ADAPTER FOR MORSER TAPER WITH TANG, MK1/2/3/4, 有效長100~170mm

Form A

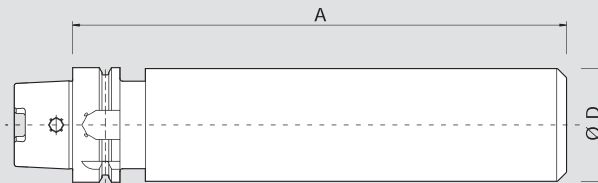
HSK-A/DIN 69893-1

品質保證 Certificate of Quality
<input checked="" type="checkbox"/> 刀桿動平衡等級 <input checked="" type="checkbox"/> Chuck balanced G6.3 / 8,000 r.p.m.
<input checked="" type="checkbox"/> 所有功能面, 全面加工 <input checked="" type="checkbox"/> All functional surfaces machined
<input checked="" type="checkbox"/> 精度高於DIN標準 <input checked="" type="checkbox"/> More accurate than DIN



DIN 69893-1 HSK-A63/100, 莫氏斜度鎖牙刀桿 ADAPTER FOR MORSER TAPER WITH TANG, MK1/2/3/4, 有效長110~170mm

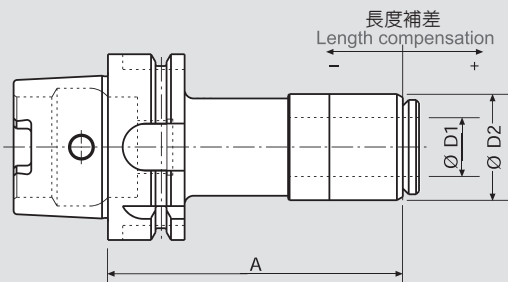
品質保證 Certificate of Quality
<input checked="" type="checkbox"/> 所有功能面, 全面加工 <input checked="" type="checkbox"/> All functional surfaces machined
<input checked="" type="checkbox"/> 精度高於DIN標準 <input checked="" type="checkbox"/> More accurate than DIN



DIN 69893-1 HSK-A63/100, 特殊訂作加工用刀桿 BLANK ADAPTER, 直徑64/83mm, 有效長250mm

Form A

品質保證 Certificate of Quality
<input checked="" type="checkbox"/> 所有功能面, 全面加工 <input checked="" type="checkbox"/> All functional surfaces machined
<input checked="" type="checkbox"/> 精度高於DIN標準 <input checked="" type="checkbox"/> More accurate than DIN
<input checked="" type="checkbox"/> 內冷高壓可達50bar <input checked="" type="checkbox"/> Interior high-pressure cooling up to 50 bar



DIN 69893-1 HSK-A63, 快換交換型攻牙刀桿 QUICK TAPPING CHUCK, 攻牙範圍M3~M24

進階系列/PROFI LINE
POWER CLAMP PROFI LINE
 模組化設計,擴充最方便/ THE MODULAR SYSTEM

Profi Line是Haimer公司最先進的刀具燒結技術,即使從最經濟的組合也可以升級為最高階的專業機種。

The Profi Line from Haimer is the very latest in shrink fit technology. Even starting with the economical start-up, Power Clamp Economic, the door is open for professional tool clamping.

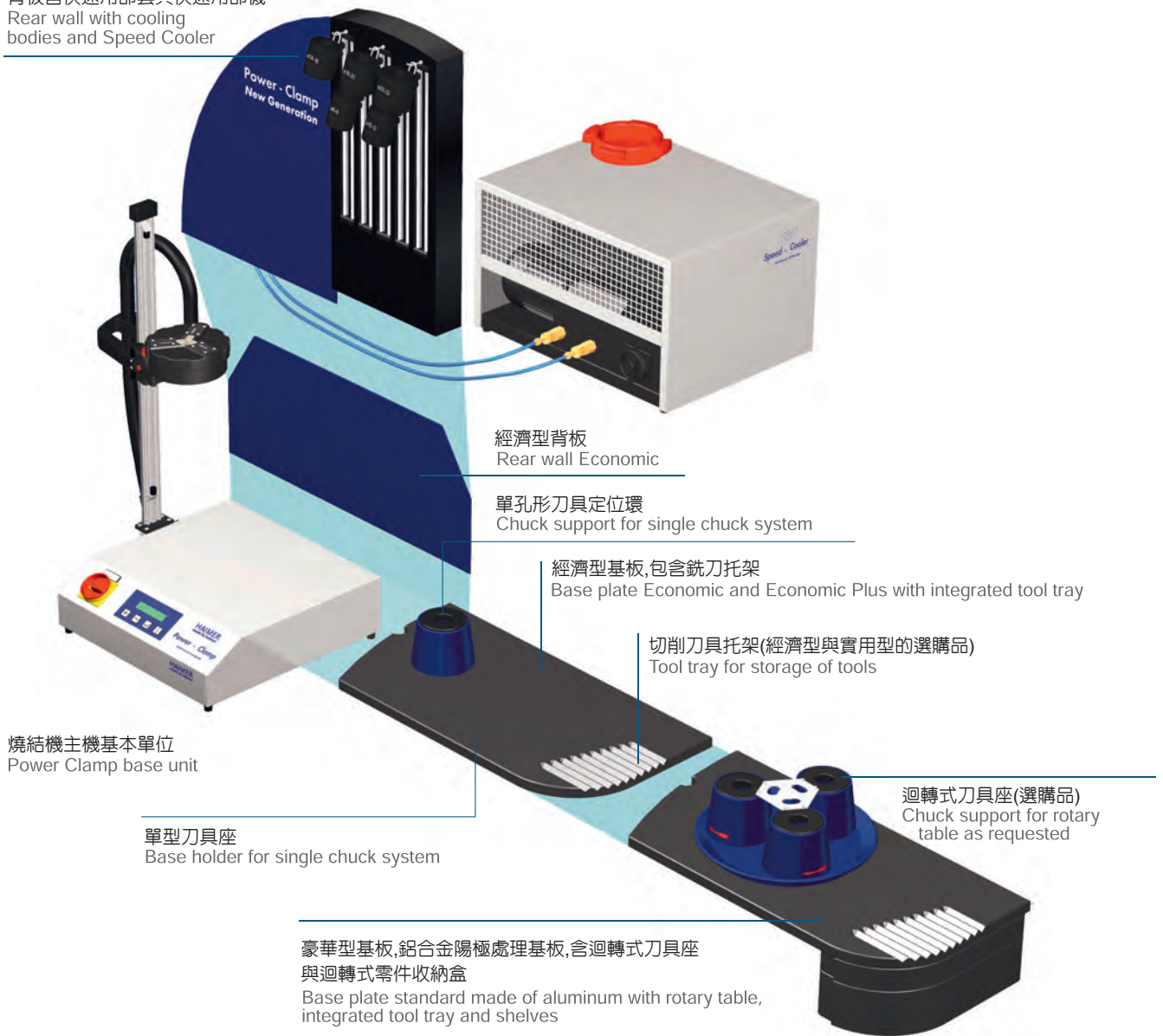
逐步的擴充燒結機的特性

燒結機基本單元可以搭配兩種不同的背板,刀具支持座也可以從單孔升級為三孔迴轉式的設計。

Step by step more shrink fit technology.

Basic unit can be combined with two rear walls and two base plates. The chuck support for the rotary table will be supplied as requested.

背板含快速冷卻套與快速冷卻機
 Rear wall with cooling bodies and Speed Cooler



燒結機主機基本單位
 Power Clamp base unit

單型刀具座
 Base holder for single chuck system

經濟型背板
 Rear wall Economic

單孔形刀具定位環
 Chuck support for single chuck system

經濟型基板,包含銑刀托架
 Base plate Economic and Economic Plus with integrated tool tray

切削刀具托架(經濟型與實用型的選購品)
 Tool tray for storage of tools

迴轉式刀具座(選購品)
 Chuck support for rotary table as requested

豪華型基板,鋁合金陽極處理基板,含迴轉式刀具座與迴轉式零件收納盒
 Base plate standard made of aluminum with rotary table, integrated tool tray and shelves

詳細燒結機數據請參見HAIMER的燒結機目錄

HAIMER 燒結機

刀桿燒結機/基本型

POWER CLAMP BASIC

適合所有的刀具(全碳化鎢與高速鋼刀具HSS)

- 功率:10KW
- 電壓:3相/400~480V,16A,50/60Hz
- 適用刀具:直徑:Ø3~32mm的碳化鎢和高速鋼

Standard shrink fit device for all tools (solid carbide and HSS).

- Power: approx. 10 KW
- Mains voltage: 3 x 400 – 480 V, 16 A
- Tools: solid carbide and HSS from Ø 3 – 32 mm

訂購編號/Order No. 80.150.00



NANO臥式刀桿燒結機 POWER CLAMP NANO

適用於小刀具的簡易燒結機

- 功率:接近13KW
- 電壓:3x400-480V,16A
- 刀具:直徑Ø3~16mm的碳化鎢和高速鋼刀具
- 臥式結構易於操作

Simple shrink fit machine for small tools.

- Power: approx. 13 kW
- Mains voltage: 3 x 400 – 480 V, 16 A
- Tools: solid carbide and HSS from Ø 3 – 16 mm
- Easy tool handling by horizontal shrinking

訂購編號/Order No. 80.160.00



進階專業經濟型燒結機

POWER CLAMP ECONOMIC PLUS SPECIAL EDITION

高效能燒結機,適合所有的刀具使用:

- 線圈:標準燒結線圈,需要更換定位環
- 單孔刀具座
- 含接觸式高效率冷卻機與冷卻水套
- 功率:13KW
- 電壓:3相/400~480V,16A
- 適用刀具直徑:Ø3-32mm, 全碳化鎢與高速鋼刀具HSS

High performance shrink fit machine for all tools.

- With standard coil
- Single chuck version
- With integrated contact cooling
- Power:13KW
- Main voltage:3x400~480 V, 16A
- Tools:solid carbide and HSS from Ø3~32mm

訂購編號/Order No. 80.110.01SE



HAIMER 燒結機

進階新式專業經濟型燒結機/POWER CLAMP ECONOMIC PLUS NG

高效能燒結機,適合所有的刀具使用:

- 線圈:新式燒結線圈,調整刀具尺寸, 不需要更換定位環
- 單孔刀具座
- 含接觸式高效率冷卻機與冷卻水套
- 功率:13KW
- 電壓:3相/400~480V,16A
- 適用刀具直徑:Ø3-32mm, 全碳化鎢與高速鋼刀具HSS

High performance shrink fit machine for all tools.

- With standard coil
- Single chuck version
- With integrated contact cooling
- Power:13KW
- Main voltage:3x400~480 V, 16A
- Tools:solid carbide and HSS from Ø3~32mm

訂購編號/Order No. 80.110.01NG



高階新式專業型燒結機/POWER CLAMP COMFORT NG

高效能燒結機,適合所有的刀具使用:

- 線圈:標準燒結線圈,調整刀具尺寸, 不需更換刀具定位環
- 三孔迴轉式刀具座
- 含接觸式高效率冷卻機與冷卻水套
- 功率:13KW
- 電壓:3相/400~480V,16A
- 適用刀具直徑:Ø3-32mm, 全碳化鎢與高速鋼刀具HSS

High performance shrink fit machine for all tools.

- With standard coil
- Rotary table with 3 stations
- With integrated contact cooling
- Power:13KW
- Main voltage:3x400-480 V, 16A
- Tools:solid carbide and HSS from Ø3~32mm

訂購編號/Order No. 80.100.00NG



刀具設定型新式燒結機/POWER CLAMP PRESET NG

高效能燒結機,適合所有的刀具使用:

- 包含刀長設定裝置
- 線圈:新式燒結線圈,調整刀具尺寸, 不需要更換刀具定位環
- 單孔刀具座
- 含接觸式高效率冷卻機與冷卻水套
- 功率:13KW
- 電壓:3相/400~480V,16A
- 適用刀具直徑:Ø3-32mm, 全碳化鎢與高速鋼刀具HSS

High performance shrink fit machine for all tools.

- With vertical stop for length presetting
- With intelligent NG coil
- Single chuck version
- With integrated contact cooling
- Power:13KW
- Main voltage:3x400~480 V, 16A
- Tools:solid carbide and HSS from Ø3~32mm

訂購編號/Order No. 80.130.00NG



高階專業型燒結機

POWER CLAMP PROFI PLUS NG

高效能燒結機,適合所有的刀具使用:

- 線圈:標準燒結線圈,不需要更換定位環
- 三孔迴轉式刀具座
- 含接觸式高效率冷卻機與冷卻水套
- 附加線圈適合刀具直徑:Ø40-45mm
- 功率:20KW
- 電壓:3相/400~480V,32A
- 適用刀具直徑:Ø3-50mm, 全碳化鎢與高速鋼刀具HSS

High performance shrink fit machine for all tools.

- With optional intelligent NG coil
- Rotary table with 3 stations
- With integrated contact cooling
- With optional second coil for Ø 40 - 50 mm
- Power:20KW
- Main voltage:3x400~480 V, 32A
- Tools:solid carbide and HSS from Ø3~50mm

訂購編號/Order No. 80.100.10NG



HAIMER 刀桿動平衡校正機

TD-1002桌上型刀具動平衡機

- | | |
|---|--|
|  可以吸收震動的基座
Vibration optimised base |  動平衡調整環修正軟體功能
Software for compensation with balancing rings |
|  使用者介面
User interface |  雙向量測
Index balancing |
|  主軸位置角度顯示
Optical indexing help |  使用主軸補償的方式校正方法
Balancing with spindle compensation |
|  雷射光指示功能
Laser marking |  單平面校正
Balancing in 1 plane |
|  黏標列印
Print label |  語言介面 |
|  徑向鑽孔
Drilling radial |  各項選擇性配件與功能
Accessories and special equipment |

訂購編號/Order No. 80.250.00



TD-2009進階型刀具動平衡機

- | | | |
|--|---|--|
|  使用人造花崗岩製成的基座
Base made of polymer concrete |  使用動平衡調整環來修正不平衡量的軟體
Software for compensation with balancing rings |  雙向量測
Index balancing |
|  使用者介面
User interface |  雙平面動平衡量測
Balancing in 2 planes |  使用主軸補償的方式校正方法
Balancing with spindle compensation |
|  主軸位置角度顯示
Optical indexing help |  固定點動平衡功能
Fixed components |  單平面校正
Balancing in 1 plane |
|  雷射光指示功能
Laser marking |  自動定位功能
Automatic indexing |  多種語言介面 |
|  黏標列印
Print label |  附件儲存抽屜
Rack for accessories | |
|  採用徑向鑽孔方式修正不平衡量
Drilling radial |  各項選擇性配件與功能
Accessories and special equipment | |

訂購編號/Order No. 80.222.00.09



TD-2009舒適型刀具動平衡機

- | | | |
|--|--|--|
|  使用人造花崗岩製成的基座
Base made of polymer concrete |  附件與特別附件
Accessories and special equipment |  包含兩個抽屜可以放置工具與主軸座
Rack for accessories |
|  使用者介面
User interface |  雙向量測
Index balancing |  多種語言介面 |
|  主軸位置角度顯示
Optical indexing help |  使用主軸補償的方式校正方法
Balancing with spindle compensation |  銑削功能
Milling program |
|  雷射光指示功能
Laser marking |  單平面量測
Balancing in 1 plane |  動平衡軟體 TD4.0
Balancing software TD 4.0 |
|  黏標列印
Print label |  雙平面量測
Balancing in 2 planes |  螢幕托架
Screen holder |
|  採用徑向鑽孔方式修正不平衡量
Drilling radial |  固定點動平衡功能
Fixed components |  PC與TFT螢幕
PC & TFT screen |
|  使用動平衡調整環來修正不平衡量的軟體
Software for compensation with balancing rings |  主軸自動定位功能
Automatic indexing | |

訂購編號/Order No. 80.224.00.09



HAIMER 刀桿動平衡校正機

刀具動平衡與設定機

兩套系統結合成單一的創新設計

刀具動平衡與刀具設定是現代切削加工製造技術中非常重要的技術，很明顯的，如果能夠把這兩套系統結合在同一台機器上，可以同時完成兩道程序。刀具動平衡與刀具設定的兩套技術是結合HAIMER的刀具動平衡技術與ZOLLER的刀具設定與量測技術的完美組合，刀具夾持在HAIMER的高精密與精密平衡主軸上，可以節省時間與提高校驗動平衡與刀具設定的精度，因為刀具可以不需要重複的取上取下。

訂購編號/Order No. 80.240.00

Two approved systems – a trendsetting innovation

Tool balancing and presetting are key elements of modern manufacturing. It is obviously a good idea to combine these two procedures. The Tool Dynamic TD Preset is a perfect combination of HAIMER's balancing technology and Zoller's measuring technology. The tool is clamped in the high precision balancing spindle fitted with HAIMER's proven adapter system. This saves time and increases accuracy because the tool does not have to be reclamped.



TD-800大尺寸用動平衡機

可以量測直徑800mm的動平衡機

採用HAIMER的動平衡技術TOOL DYNAMIC系列的设计，TD-800可以用來量測大尺寸的迴轉體，例如軸承環、砂輪與渦輪轉子。使用訂製的夾持系統，可以快速與方便的來校正各種大型轉動物體的動平衡。

訂購編號/Order No. 80.270.00

Your solution for big rotors up to diam. 800 mm

Based on the proven Tool Dynamic balancing technology the Tool Dynamic TD 800 allows balancing big rotors of all kind. Bearing rings, grinding wheels and turbine wheels. With hand tailored clamping adapters you can balance your rotors as easy and quick as usual.



TD-2010全自動刀具動平衡機

最新的全自動動平衡量測校正機

最新設計的Tool Dynamic TD2010 Automatic是一台以CNC為基礎設計的動平衡量測校正機，可以全自動的量測不平衡量，並且自動的修正不平衡。本機器可以自動的修正不平衡量，無論是單平面或是雙平面的量測，使用的修正方式可以有鑽孔、銑削與研磨，修正的刀具可以是垂直或是水平的方向來修正。

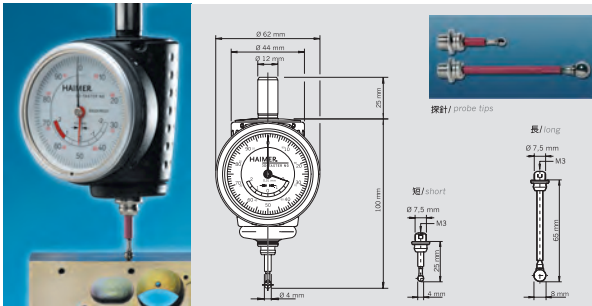
自動的平衡量測與修正- 操作原理

在量測不平衡量之後，軟體會根據修正的刀具尺寸，自動計算鑽孔深度或是銑削與研磨的深度，主軸會轉到正確的位置，配置的CNC機器根據設定的修正平面，自動地用鑽孔、銑削或研磨等方法把需要移除的重量移除，得到正確的動平衡值。沒有比這樣的機器可以做得更快與準確又簡單了！在修正不平衡量的過程中會發生過切的情況都不會再發生了。

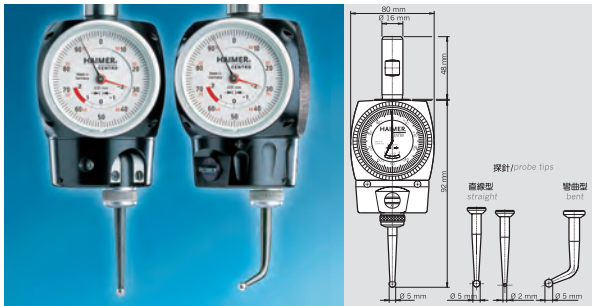
訂購編號/Order No. 80.260.00



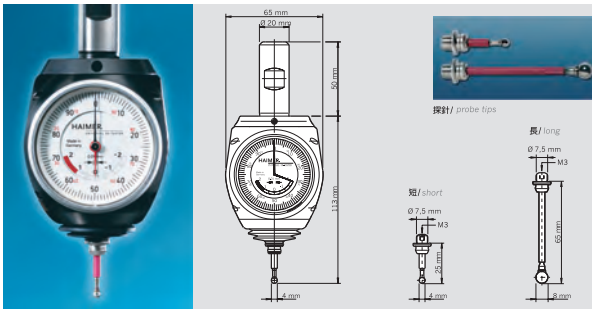
HAIMER 3D-TASTER 尋邊器



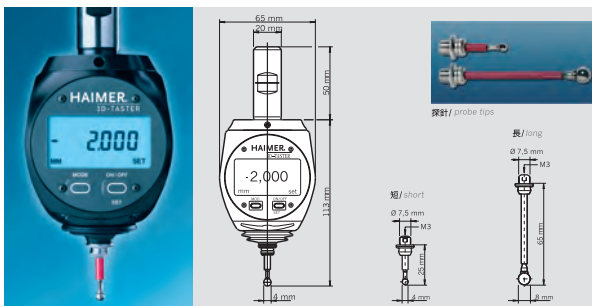
技術資料 / Technical details	
新一代3D-Taster尋邊器12mm夾柄，並包括短探針 / 3D-Taster NG with clamping shank, diam. 12 mm including short probe tip	
精度 / Accuracy	0.01 mm
不包括夾持柄的長度 / Length without clamping shank	100 mm
訂購編號 / Order No.	80.360.00 NG
相關配件 / Accessories	
短探針 / Short Probe tip Ø 4 mm	
訂購編號 / Order No.	80.362.00
長探針 / Long Probe tip Ø 8 mm	
訂購編號 / Order No.	80.363.00



技術資料 / Technical details	
探頭直徑 Ø5mm，柄徑 Ø16mm. Centro with straight probe tip, Ø 5 mm, clamping shank Ø 16 mm	
對心精度 / Centering accuracy	0.003 mm
最高轉速 / Max. rotation speed	150 r.p.m.
孔量測範圍 (內徑) / Measuring range interior diameter (drill hole)	3-125 mm
軸量測範圍 (外徑) (量測外徑需要使用彎探針) / Measuring range exterior diameter (shaft, with probe tip bent)	0-125 mm
訂購編號 / Order No.	80.300.00
相關配件 / Accessories	
直探針5mm探頭直徑 / Probe tip straight with diameter of ball 5 mm	
訂購編號 / Order No.	80.301.00
彎探針5mm探頭直徑 / Probe tip bent with diameter of ball 5 mm	
訂購編號 / Order No.	80.302.00
直探針2mm探頭直徑，適合小孔徑使用 / Probe tip straight with diameter of ball 2 mm, for small bores	
訂購編號 / Order No.	80.303.00



技術資料 / Technical details	
通用3D-Taster尋邊器包括短探針 / Universal 3D-Taster including clamping shank Ø 20 mm short probe tip	
精度 / Accuracy	0.01 mm
不包括夾持柄的長度 / Length without clamping shank	113 mm
訂購編號 / Order No.	80.360.00
相關配件 / Accessories	
短探針 / Short probe tip Ø 4 mm	
訂購編號 / Order No.	80.362.00
長探針 / Long probe tip Ø 8 mm	
訂購編號 / Order No.	80.363.00



技術資料 / Technical details	
數字式3D-Taster尋邊器連短探針 / 3D-Taster Digital with short probe tip Ø 4 mm	
最小測量單位 / Smallest unit of measure	0.001 mm
測量精度 / Measuring accuracy	0.005 mm
顯示器規格 / Display	
顯示模式 / Display mode	可切換公英制尺寸 / May be switched to inch or metric
顯示幕尺寸 / Display size	45x23 mm
字元高度 (英制) / Height of numbers	8.5 mm
訂購編號 / Order No.	80.460.00
相關配件 / Accessories	
短探針 / Short probe tip Ø 4 mm	
訂購編號 / Order No.	80.362.00
長探針 / Long probe tip Ø 8 mm	
訂購編號 / Order No.	80.363.00

品質決定一切

始於1977年由Haimer先生一人開始;今日Haimer之產品於德國國內已占領先地位,於國際上亦因其優良之品質而被廣泛採用。

我們的宗旨:

Haimer專注生產一系列優質及價格具競爭力之產品,而具前瞻性之技術更能進一步令我們的客戶感到物超所值! 我們只依據一貫對產品嚴格要求以冀對客戶製造優質產品及增值之信念,共創雙贏。

誠如Haimer之宗旨:以質取勝!

Decide on quality.

Since 1977 we have produced ultra-precise machine components and special machines designed for specific branches. Always made of the highest quality and perfect construction. In accordance with our corporate philosophy: **Quality wins!**



CNC 刀具系列

- 精度高、價格實惠
- 刀柄精度保證AT3
- 全部動平衡校正
- DIN 69871-SK40/50
- JIS B6339-BT30/40/50
- CAT 40/50
- DIN69893 HSK-A, HSK-C
- HSK-CHSK-E, HSK-F
- CAPTO C6

Made by Haimer: Tool Holders

- Highest precision at fair prices.
- DIN 69871 - SK 30, SK 40, SK 50
- CAT 40, CAT 50
- JIS B 6339 - BT 30, BT 40, BT 50
- DIN69893
- HSK-A, HSK-C, HSK-E, HSK-F
- CAPTO C6



刀柄動平衡機

- 模組化設計,適用範圍最大
- SK/MSA BT/CAT/HSK/Capto 適用於刀柄,砂輪和轉子。
- 各種規格齊全
- 操作簡單,校正迅速

Made by Haimer: Tool Dynamic

- Modular balancing system for tool holders, grinding wheels and rotors.
- Measuring in one or two planes
- Easy and fast handling.



POWER CLAMP 系列

- 13KW功率高,刀具使用範圍3-50mm
- 適用於HSS與碳化鎢刀具
- 適用範圍最廣

POWER CLAMP NANO系列

- 10KW功率高,適用於碳化鎢刀具
- 燒結式刀桿精度<0.003mm
- 有強力行與超薄型設計
- 適合Ø3~16mm刀具

Made by Haimer: Power Clamp

- Inductive shrink fit equipment for shortest rigging periods.
- Tool change just by pressing a button.
- For shrinking HSS and solid carbide tools from Ø3 to Ø50mm



3D-Taster

- 操作簡單,使用方便
- 高精度,適合各種CNC機器使用
- 各種式樣可以選擇

Made by Haimer: Sensors

- For centering bores and shafts.
- Different version.
- High measuring accuracy.



總公司: 40252台中市南區復興路二段120-2號
TEL: 04-2260-5352 FAX: 04-2260-8765
<http://www.jimmore.com.tw>
E-mail: sales@jimmore.com.tw